

Light efficiency:

70 Lumen/Watt

Light quality:

CRI: 73.3

Color temperature:

8610 K

Output: 14467 lm

Peak: 18733 cd

Power: 205.3 W

PF: 1.0



Tracking number: [n/a](#)

Product name:

JoltBar FXIP

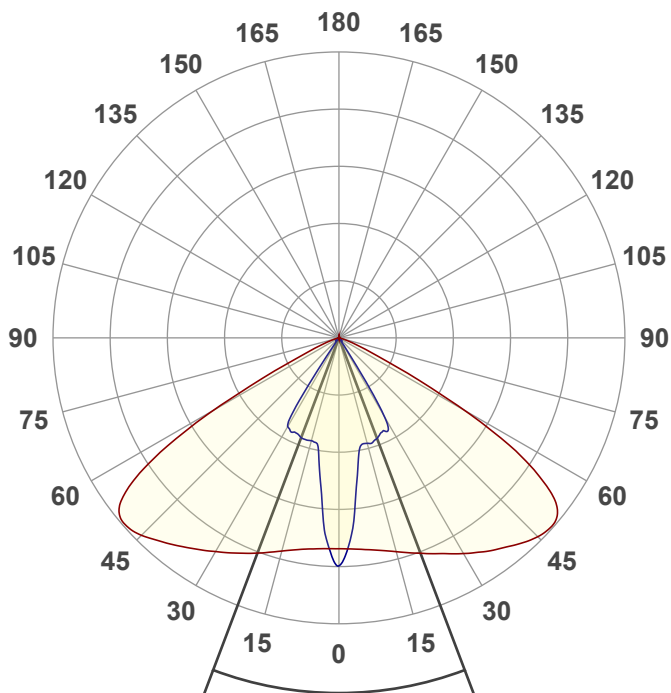
Item number:

White

Date and time:

4/17/2024 10:21:15 AM

Description:



Beam angle

41.5°

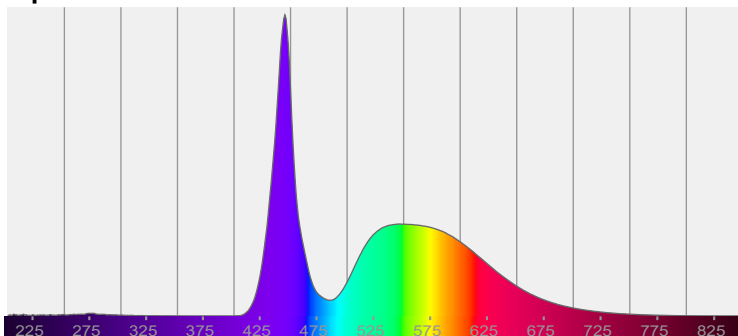


CIE 1931

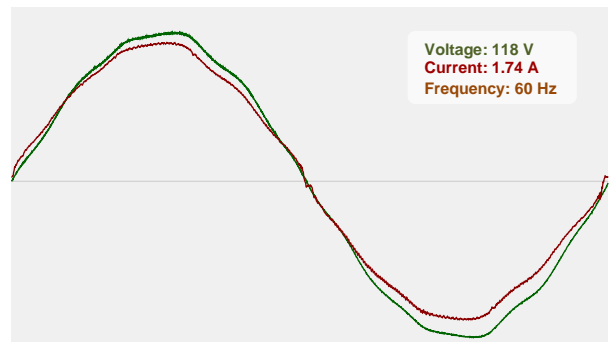
x: 0.296

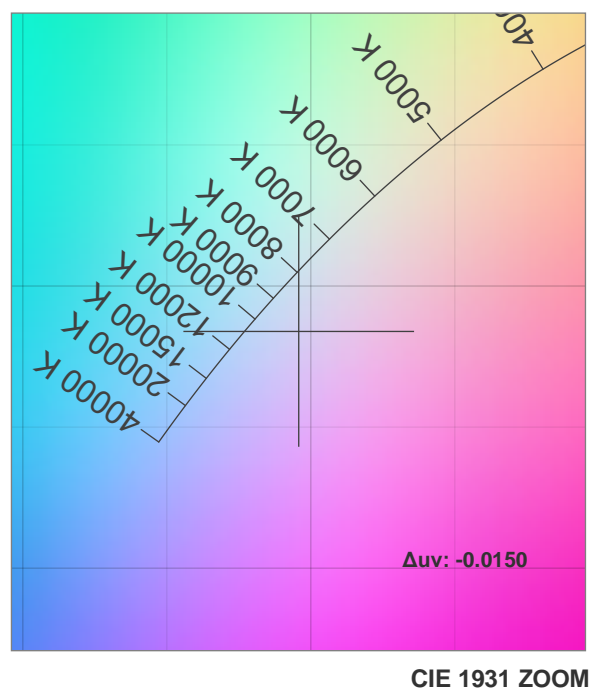
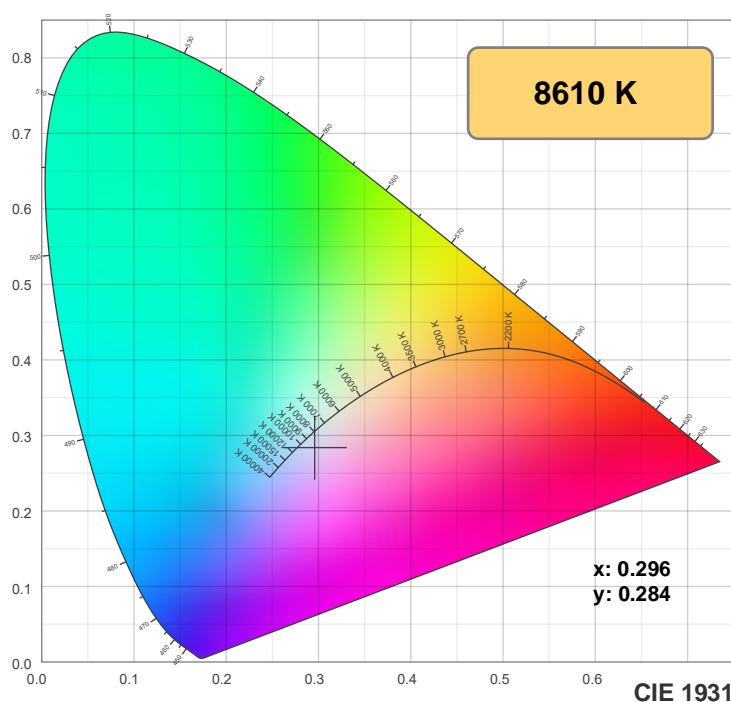
y: 0.284

Spectra

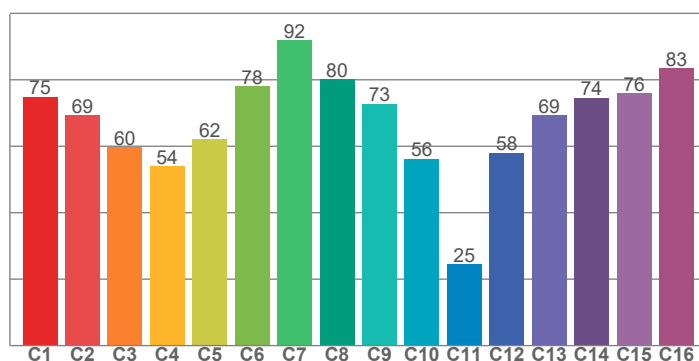


Power

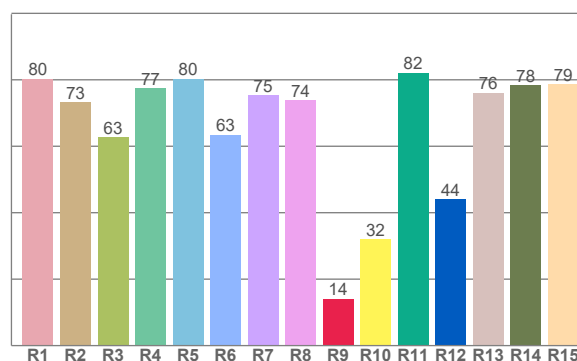




TM-30: 67.1



CRI: 73.3 (R1-R8)



CRI R values, only R1-R8 are used to calculate final CRI value

R1	R2	R3	R4	R5	R6	R7	R8	R9	R10	R11	R12	R13	R14	R15
80.3	73.3	62.7	77.5	80.3	63.4	75.4	73.7	14.1	31.9	82.1	44.1	76.1	78.3	78.6

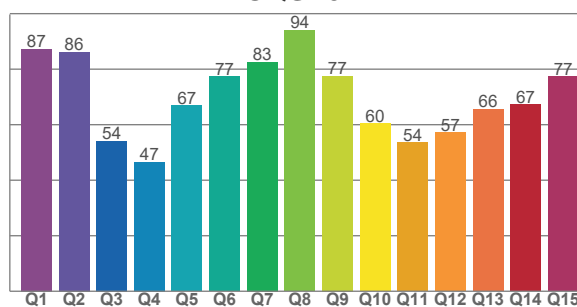
TM30 C values, 16 binned values out of total of 99 C values

C1	C2	C3	C4	C5	C6	C7	C8	C9	C10	C11	C12	C13	C14	C15	C16
74.9	69.3	59.7	53.9	62.0	78.0	91.9	80.1	72.8	56.2	24.5	58.1	69.3	74.5	75.9	83.5

CQS Q values

Q1	Q2	Q3	Q4	Q5	Q6	Q7	Q8	Q9	Q10	Q11	Q12	Q13	Q14	Q15
87.2	86.2	54.2	46.6	66.8	77.3	82.6	94.0	77.5	60.4	53.6	57.2	65.5	67.3	77.3

CQS: 67.2



Color parameters

Color temperature	Color rendering index	Red component	Color fidelity	Color gamut	Color quality scale	Color coordinate cie 1931	Color coordinate cie 1931	Color coordinate	Color coordinate	Color deviation from black body
CCT	CRI	CRI R9	TM30 Rf	TM30 Rg	CQS	x	y	u	v	Δuv
8610 K	73.3	14.1	67.1	99.6	67.2	0.296	0.284	0.203	0.293	-0.0150

TM-30 details

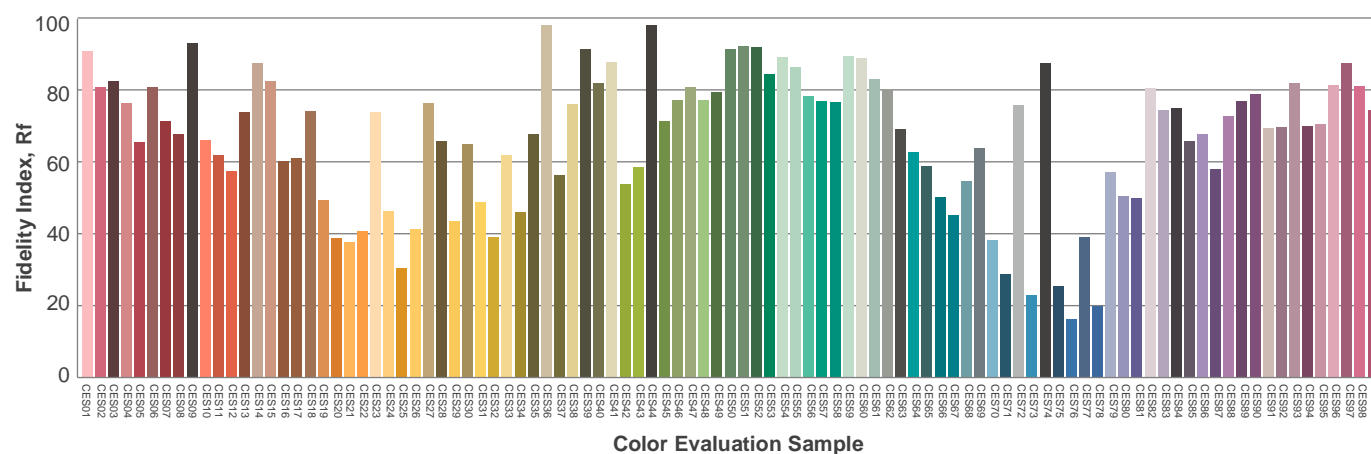
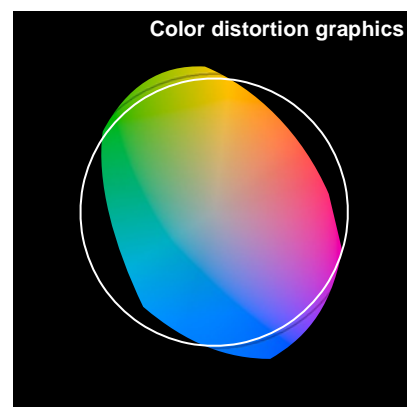
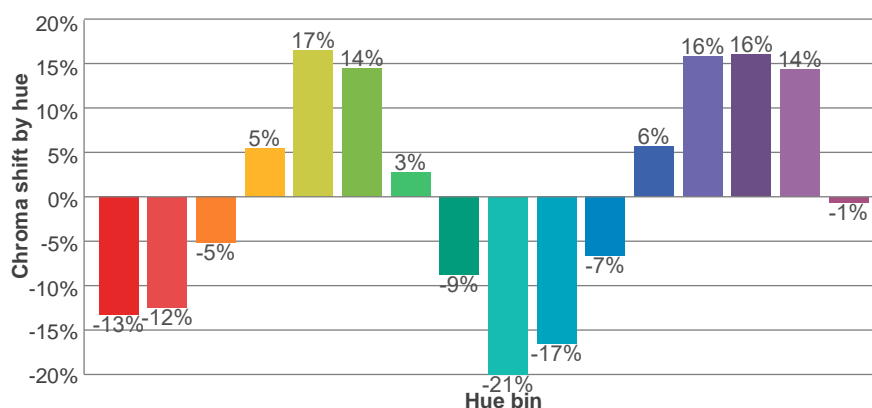
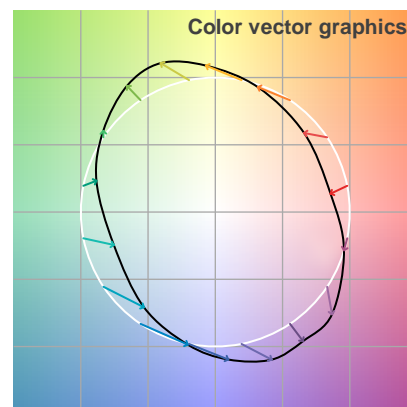
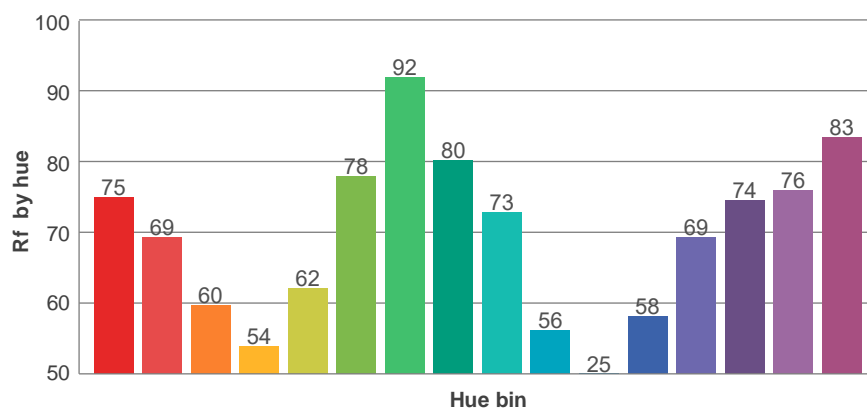
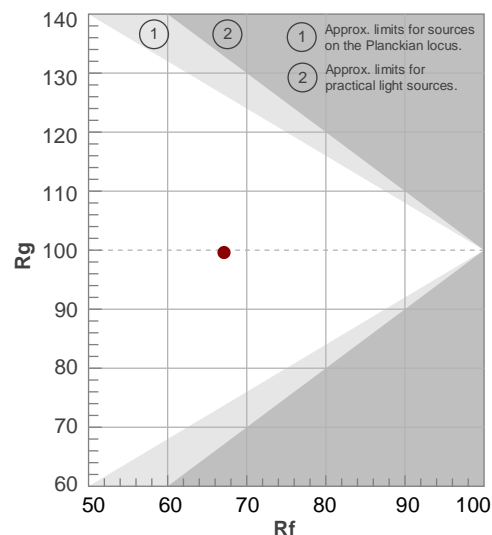
Rf 67.1

Fidelity index Rf

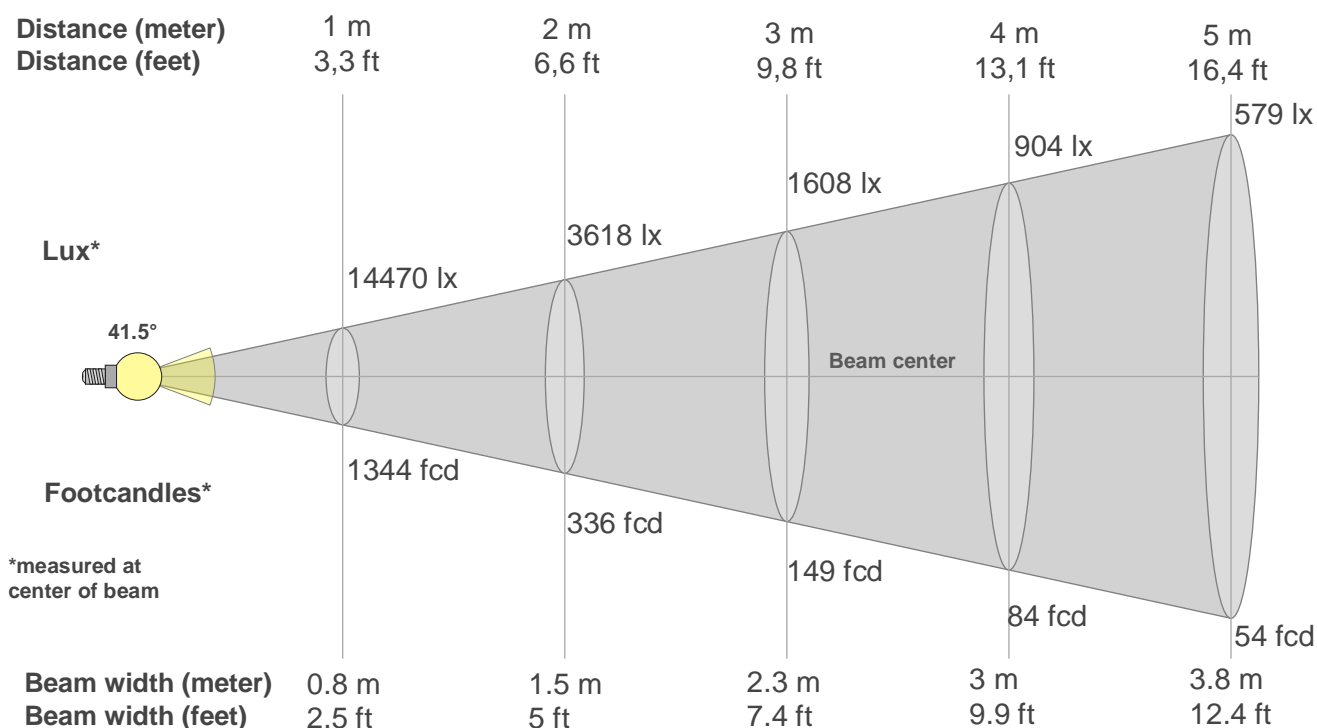
Rg 99.6

Gamut index Rg

Hue Bin	Ri	Shifts (%)	
		Chroma	Hue
1	75	-13%	-3%
2	69	-12%	12%
3	60	-5%	25%
4	54	5%	28%
5	62	17%	18%
6	78	14%	3%
7	92	3%	-4%
8	80	-9%	-6%
9	73	-21%	9%
10	56	-17%	29%
11	25	-7%	38%
12	58	6%	31%
13	69	16%	20%
14	74	16%	1%
15	76	14%	-15%
16	83	-1%	-9%



Beam details



Beam intensities from 1-20m

1m	2m	3m	4m	5m	6m	7m	8m	9m	10m	11m	12m	13m	14m	15m	16m	17m	18m	19m	20m
3.3ft	6.6ft	9.8ft	13.1ft	16.4ft	19.7ft	23ft	26.2ft	29.5ft	32.8ft	36.1ft	39.4ft	42.7ft	45.9ft	49.2ft	52.5ft	55.8ft	59.1ft	62.3ft	65.6ft
14470lx	3618lx	1608lx	904lx	579lx	402lx	295lx	226lx	179lx	145lx	120lx	100lx	86lx	74lx	64lx	57lx	50lx	45lx	40lx	36lx
1344.3fcd	336.1fcd	149.4fcd	84fcd	53.8fcd	37.3fcd	27.4fcd	21fcd	16.6fcd	13.4fcd	11.1fcd	9.3fcd	8fcd	6.9fcd	6fcd	5.3fcd	4.7fcd	4.1fcd	3.7fcd	3.4fcd

Intensities in 0° c-plane

0°	2°	4°	6°	8°	10°	12°	14°	16°	18°	20°	22°	24°	26°	28°	30°	32°	34°	36°	38°
14.5K	13.9K	14.0K	14.0K	14.1K	14.2K	14.3K	14.5K	14.7K	14.9K	15.1K	15.3K	15.6K	15.8K	16.1K	16.4K	16.7K	17.0K	17.3K	17.6K
100%	96%	96%	97%	97%	98%	99%	100%	102%	103%	104%	106%	108%	109%	111%	113%	115%	118%	120%	121%

Intensities in 90° c-plane

0°	2°	4°	6°	8°	10°	12°	14°	16°	18°	20°	22°	24°	26°	28°	30°	32°	34°	36°	38°
14.5K	14.2K	12.7K	10.6K	8.9K	7.7K	7.2K	7.2K	7.2K	7.2K	7.1K	7.0K	6.8K	6.8K	6.9K	5.9K	2.6K	0.2K	0.1K	0.1K
100%	98%	88%	73%	61%	53%	50%	50%	50%	50%	49%	48%	47%	47%	48%	41%	18%	1%	1%	0%

Intensities in 180° c-plane

0°	2°	4°	6°	8°	10°	12°	14°	16°	18°	20°	22°	24°	26°	28°	30°	32°	34°	36°	38°
14.5K	13.9K	13.9K	14.0K	14.1K	14.2K	14.3K	14.5K	14.6K	14.9K	15.1K	15.3K	15.5K	15.8K	16.0K	16.3K	16.5K	16.8K	17.1K	17.4K
100%	96%	96%	97%	97%	98%	99%	100%	101%	103%	104%	106%	107%	109%	111%	112%	114%	116%	118%	120%

Intensities in 270° c-plane

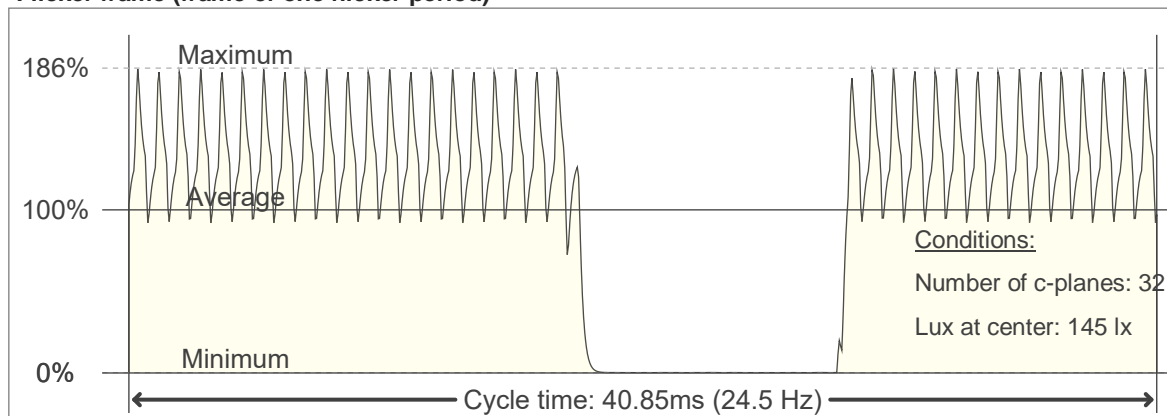
0°	2°	4°	6°	8°	10°	12°	14°	16°	18°	20°	22°	24°	26°	28°	30°	32°	34°	36°	38°
14.5K	14.3K	13.0K	10.8K	9.1K	7.7K	7.1K	7.0K	7.0K	7.1K	7.1K	7.0K	6.9K	6.9K	6.9K	6.7K	5.3K	1.3K	0.2K	0.1K
100%	99%	90%	74%	63%	53%	49%	49%	49%	49%	49%	48%	48%	48%	48%	46%	37%	9%	1%	0%

Beam angle 50%	Field angle 10%	Cutoff angle 2,5%	Intensity ratio in 120° cone	Intensity ratio in 90° cone
41.5°	84.6°	92.5°	97.0%	82.5%

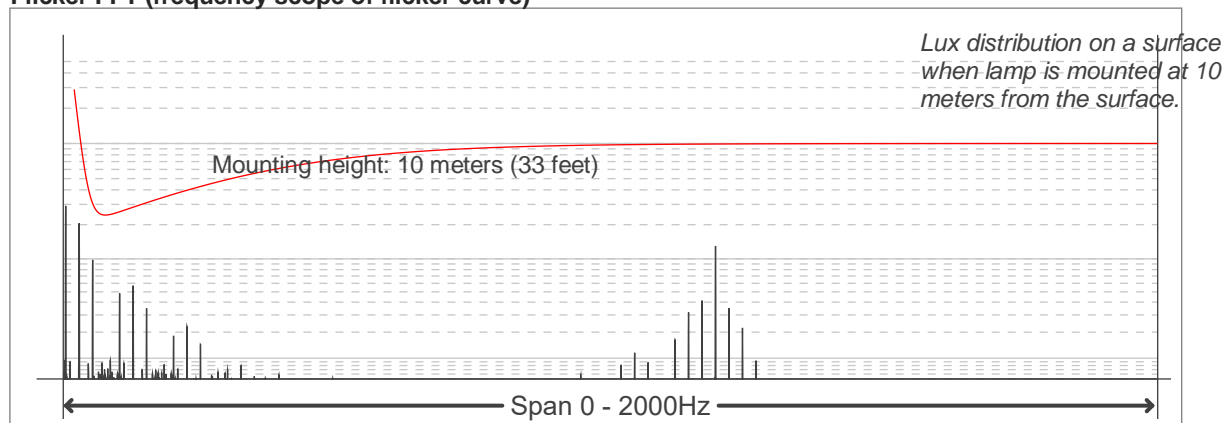
Flicker



Flicker frame (frame of one flicker period)



Flicker FFT (frequency scope of flicker curve)



Flicker results:

Flicker frequency:		24.48 Hz	
Flicker index:	0.26	JA8/10 40Hz	67.57 %
Flicker percentage:	99.81 %	JA8/10 90Hz	139.63 %
SVM: (Visual flicker)	1.23	JA8/10 200Hz	123.51 %
PstLM	74.11	JA8/10 400Hz	118.21 %
Mp	51.72	JA8/10 1000Hz	129.07 %

Flicker conditions:

Sample rate:	20000 samples/second
--------------	----------------------